

**DIMENSIONS**

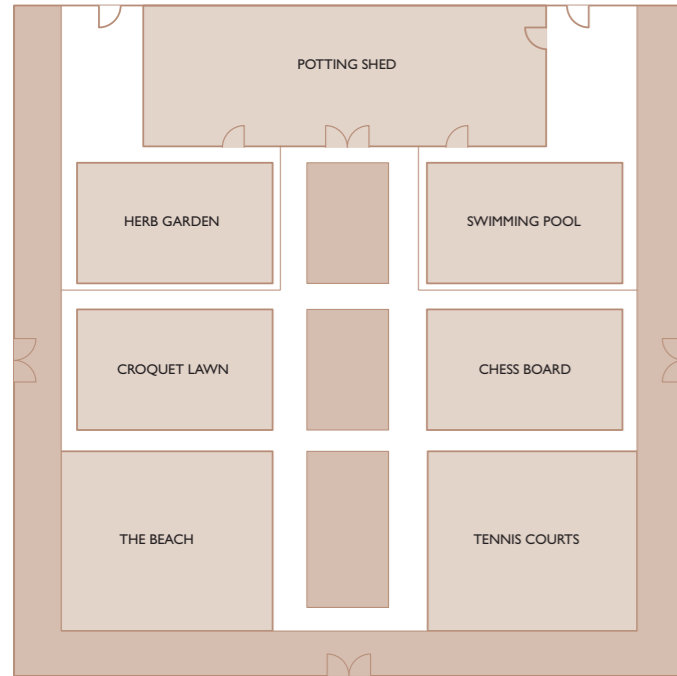
Area	247.5m <sup>2</sup>
Height	1.70 up to 3.43m
Length	55m
Width	4.5m

**SET-UPS**

	<b>Max</b>
Seated buffet	60
Standing buffet	100
Dinner rounds	60
Reception	150

**POTTING SHED**

- Natural daylight
- Ground floor
- Private entrance
- Slanted ceiling
- Wi-Fi with private SDSL connection up to 5mb and additional bandwidth available on request
- Divisible into four interlinking rooms
- Overlooks the Walled Garden



**WALLED GARDEN**

**DIMENSIONS**

Area	13,048m <sup>2</sup>
Length	116.5m
Width	112m

**THE BEACH**

Area	1,330m <sup>2</sup>
Length	38m
Width	35m

**CROQUET LAWN**

Area	684m <sup>2</sup>
Length	18m
Width	38m

**CHESS BOARD**

Area	819m <sup>2</sup>
Length	19.5m
Width	42m

**TENNIS COURTS**

Area	1,120m <sup>2</sup>
Length	35m
Width	32m

**SWIMMING POOL**

Length	25m
Width	10m

**NORTH LAWN**

Area	587.25m <sup>2</sup>
Length	43.6m
Width	13.5m

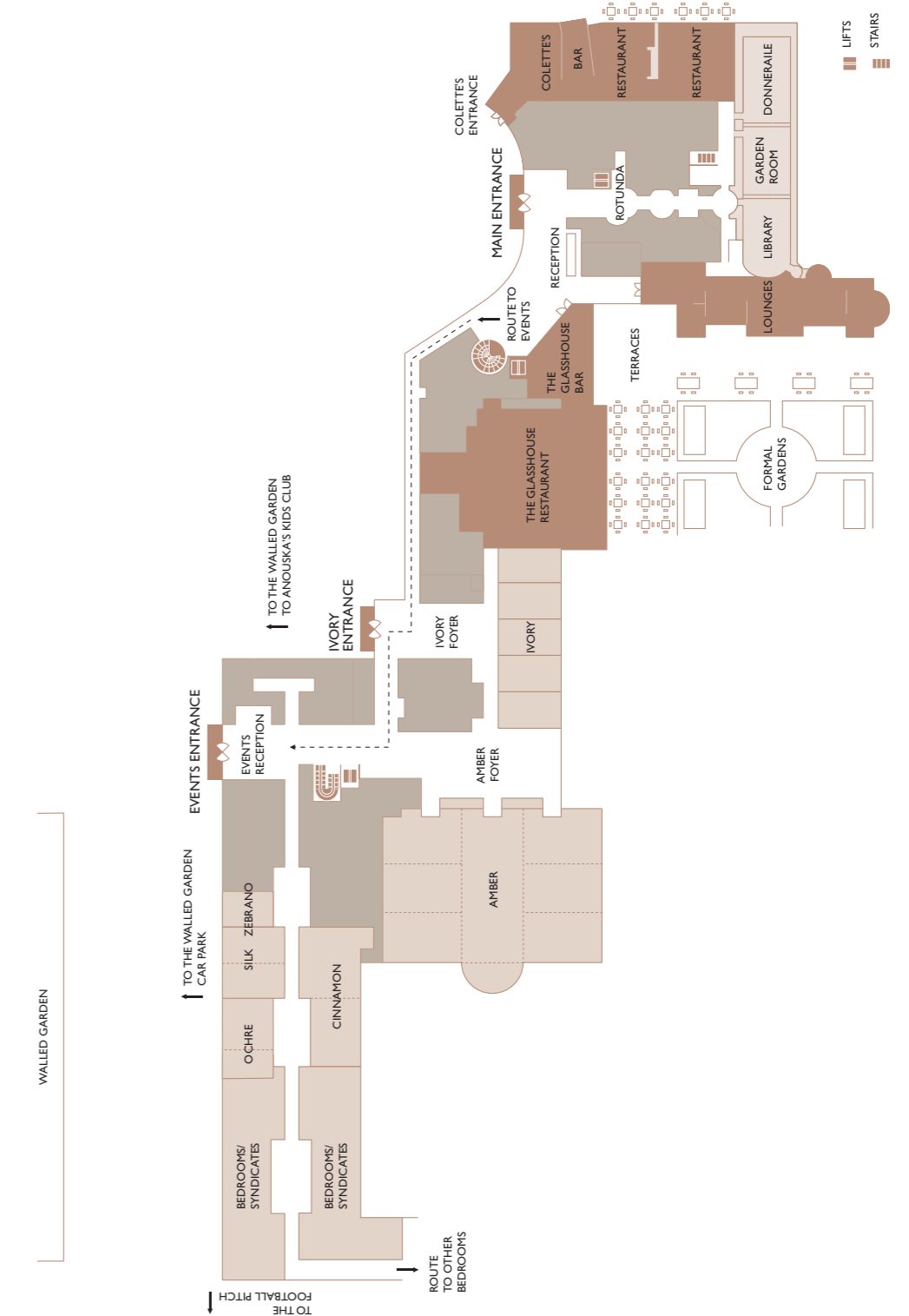
**CENTRAL LAWN**

Area	178.2m <sup>2</sup>
Length	13.2m
Width	13.5m

**SOUTH LAWN**

Area	580.5m <sup>2</sup>
Length	43m
Width	13.5m

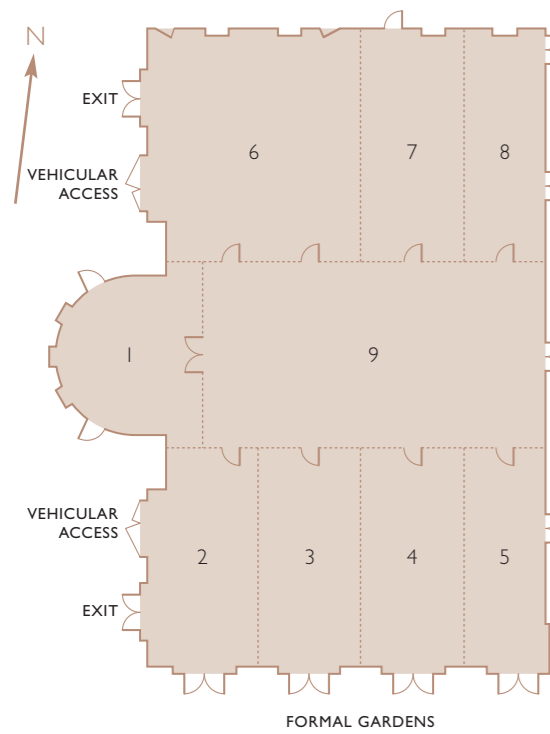
**THE GROVE**



**THE GROVE** Chandler's Cross Hertfordshire WD3 4TG | Telephone: +44 (0)1923 296020  
 Facsimile: +44 (0)1923 294249 | Email: [events@thegrove.co.uk](mailto:events@thegrove.co.uk) | [www.thegrove.co.uk](http://www.thegrove.co.uk)

One of *TheLeadingHotels of theWorld*<sup>®</sup>





- Purpose built
- Natural daylight
- Ground floor
- Private entrance
- Divisible into 9 rooms
- Adjoining reception area
- Vehicular access x2
- Linked to the Cinnamon
- Linked room control
- Air conditioning
- In-built PA system
- Tungsten Halogen lights
- Bespoke chandelier

- 3x3 phase 63amp separate feed in Amber 1 and Amber 5
- Wi-Fi with private SDSL connection up to 5mb and additional bandwidth available on request
- In-built projector in rooms 2/3, 4, 6 and 7
- Terrace overlooking the formal gardens
- 8 ceiling hanging points at 1 tonne each weight loading

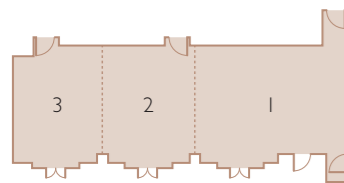
#### DIMENSIONS

Area	521.5m <sup>2</sup>
Height	min 3.9m to 4.7m
Length	29.56m
Width	17.63m

#### SET-UPS

Theatre	450
Classroom	300
Cabaret	256
Exhibition	36 stands of 3x2m
Lunch/dinner	480
Dinner dance	380
Seated buffet	360
Standing buffet	500
Reception	700

### AMBER



#### DIMENSIONS

Area	92.34m <sup>2</sup>
Height	2.9m to 3.4m
Length	17.1m
Width	5.4m

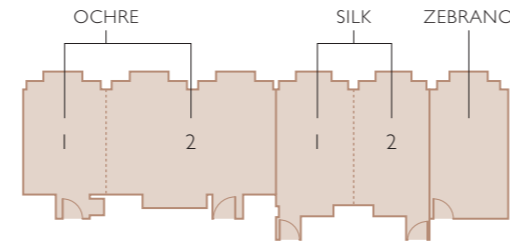
#### SET-UPS

Theatre	100
Classroom	48
Boardroom	40
Cabaret	40
Lunch/dinner	70
Dinner/dance	50
Standing buffet	100
Seated buffet	50
Reception	120
Exhibition	6 stands of 3x2m

### CINNAMON

- Purpose built
- Natural daylight
- Ground floor
- Divisible into 3 rooms
- Air conditioning
- Tungsten Halogen lights
- In-room dimmer controls
- Bespoke chandelier
- Light reduction
- Linked to Amber
- Wi-Fi with private SDSL connection up to 5mb and additional bandwidth available on request
- In-built projector in Cinnamon 1
- Plasma screen technology in Cinnamon 2 & 3

All meeting room capacities based on front projection unless otherwise stated.



### OCHRE

- Purpose built
- Natural daylight
- Ground floor
- Divisible into 2 rooms
- Air conditioning
- Tungsten Halogen lights

- Light reduction
- Plasma screen technology in Ochre 2
- Wi-Fi with private SDSL connection up to 5mb and additional bandwidth available on request

#### DIMENSIONS

Area	54.72m <sup>2</sup>
Height	2.9m to 3.4m
Length	11.4m
Width	4.8m

#### SET-UPS

Theatre	48
Classroom	30
Boardroom	28
U-shape	27
Lunch/dinner	40
Cabaret	24
Reception	72
Seated buffet	20
Standing buffet	40

### SILK

- Purpose built
- Natural daylight
- Ground floor
- Divisible into 2 rooms
- Air conditioning
- In-room dimmer controls

- Tungsten Halogen lights
- Light reduction
- Plasma screen technology
- Wi-Fi with private SDSL connection up to 5mb and additional bandwidth available on request

#### SET-UPS

Theatre	42
Classroom	20
Boardroom	16
U-shape	12
Lunch/dinner	30
Reception	56
Seated buffet	10
Standing buffet	20
Exhibition	4 stands of 3x2m

#### DIMENSIONS

Area	42m <sup>2</sup>
Height	2.9m to 3.4m
Length	7.5m
Width	5.6m

### ZEBRANO

- Purpose built
- Natural daylight
- Ground floor
- Air conditioning
- In-room dimmer controls
- Tungsten Halogen lights
- Light reduction

- Wi-Fi with private SDSL connection up to 5mb and additional bandwidth available on request
- Plasma screen technology
- Dry wipe walls
- Fixed oval board room table

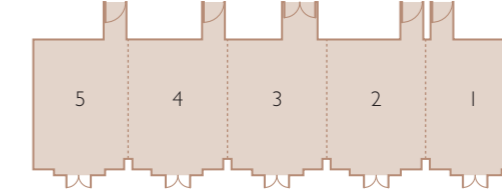
#### DIMENSIONS

Area	19.44m <sup>2</sup>
Height	2.9m to 3.4m
Length	5.4m
Width	3.6m

#### SET-UPS

Boardroom	10 Fixed Boardroom
Lunch or dinner	10 Fixed Boardroom

All meeting room capacities based on front projection unless otherwise stated.



### IVORY

#### DIMENSIONS

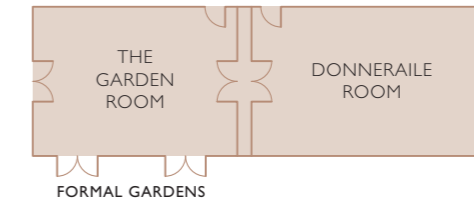
Area	132.24m <sup>2</sup>
Height	2.9m to 3.4m
Length	23.2m
Width	5.7m

#### SET-UPS

Theatre	120
Classroom	72
Boardroom	54
Cabaret	64
Reception	150
Lunch/dinner	120
Dinner dance	80
Standing buffet	150
Seated buffet	80
Exhibition	8 stands of 3x2m
Ivory reception	120 (reception)

- Purpose built
- Natural daylight
- Ground floor
- Private entrance
- Divisible into 5 rooms
- Private reception area
- Air conditioning
- In-room dimmer controls
- Tungsten Halogen lights
- Bespoke chandelier
- Light reduction

- Plasma screen technology in rooms 1, 2, 4 & 5 which can be linked
- 1x 63amp 3 phase power
- In-built PA system
- Wi-Fi with private SDSL connection up to 5mb and additional bandwidth available on request
- Terrace overlooking the formal gardens



### DONNERAILE

- Located in the Grade 2 listed Mansion
- Ground floor
- Beautifully restored
- Natural daylight
- High ceilings and large windows
- Views over the golf course
- Adjoining the Garden Room
- In-room dimmer controls
- Chandelier lighting
- Stunning boardroom/dining table
- Wi-Fi with private SDSL connection up to 5mb and additional bandwidth available on request
- Air conditioning
- Working fireplace

#### DIMENSIONS

Area	60.6m <sup>2</sup>
Length	10.1m
Width	6.45m

#### SET-UPS

Boardroom	24
Lunch/dinner	24
Cabaret	32
Dinner	40

All meeting room capacities based on front projection unless otherwise stated.

### THE GARDEN ROOM

- Located in the Grade 2 listed Mansion
- Ground floor
- Beautifully restored
- Natural daylight
- High ceilings and large windows
- Overlooking formal gardens
- Access to formal gardens

- Adjoining the Donneraile
- Chandelier lighting
- In-room dimmer controls
- Wi-Fi with private SDSL connection up to 5mb and additional bandwidth available on request
- Air conditioning

#### DIMENSIONS

Area	51.6m <sup>2</sup>
Length	8.6m
Width	6.5m

#### SET-UPS

Boardroom	14
U-shape	12
Lunch/dinner	30
Reception	40
Seated buffet	20
Standing buffet	30

All meeting room capacities based on front projection unless otherwise stated.